

INTRODUCING...

PRG GLOBAL SCENIC

SCENIC SOLUTIONS FOR ANY CREATIVE VISION



SCENIC'S NEXT LEVEL

PRG Global Scenic offers event designers and producers an advantage that is simply unavailable elsewhere:

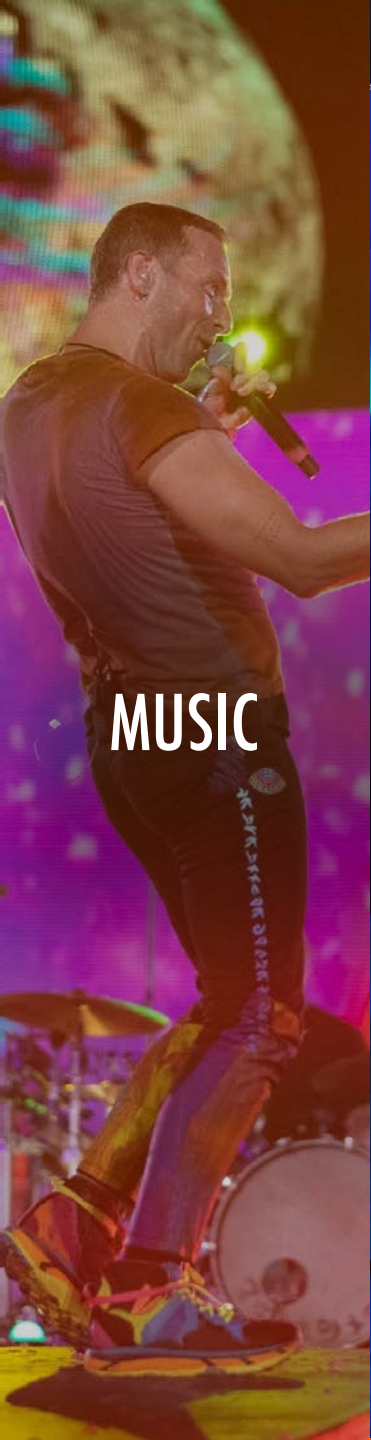
The seamless integration of any form of production technology—video and media, lighting, audio, rigging, camera and more—into a singular scenic context responsive to creative vision, budget and timeline.

As the world's leading provider of production solutions, PRG has in-house the gear, the logistics and, most important, the expertise to bring all of the elements together to evoke immersion and delight from your audience.

PRG's Global Scenic offering is also scalable. Our work ranges from simple corporate gatherings to some of the most important and technically demanding moments in the culture today.

Thank you for considering PRG's Global Scenic team for your project.





MUSIC



THEATRE



**SPECIAL
EVENTS**



TV & FILM



**CORPORATE
EVENTS**

WHO WE ARE

PRG powers some of the most important moments in popular culture across the experiential and entertainment landscape.

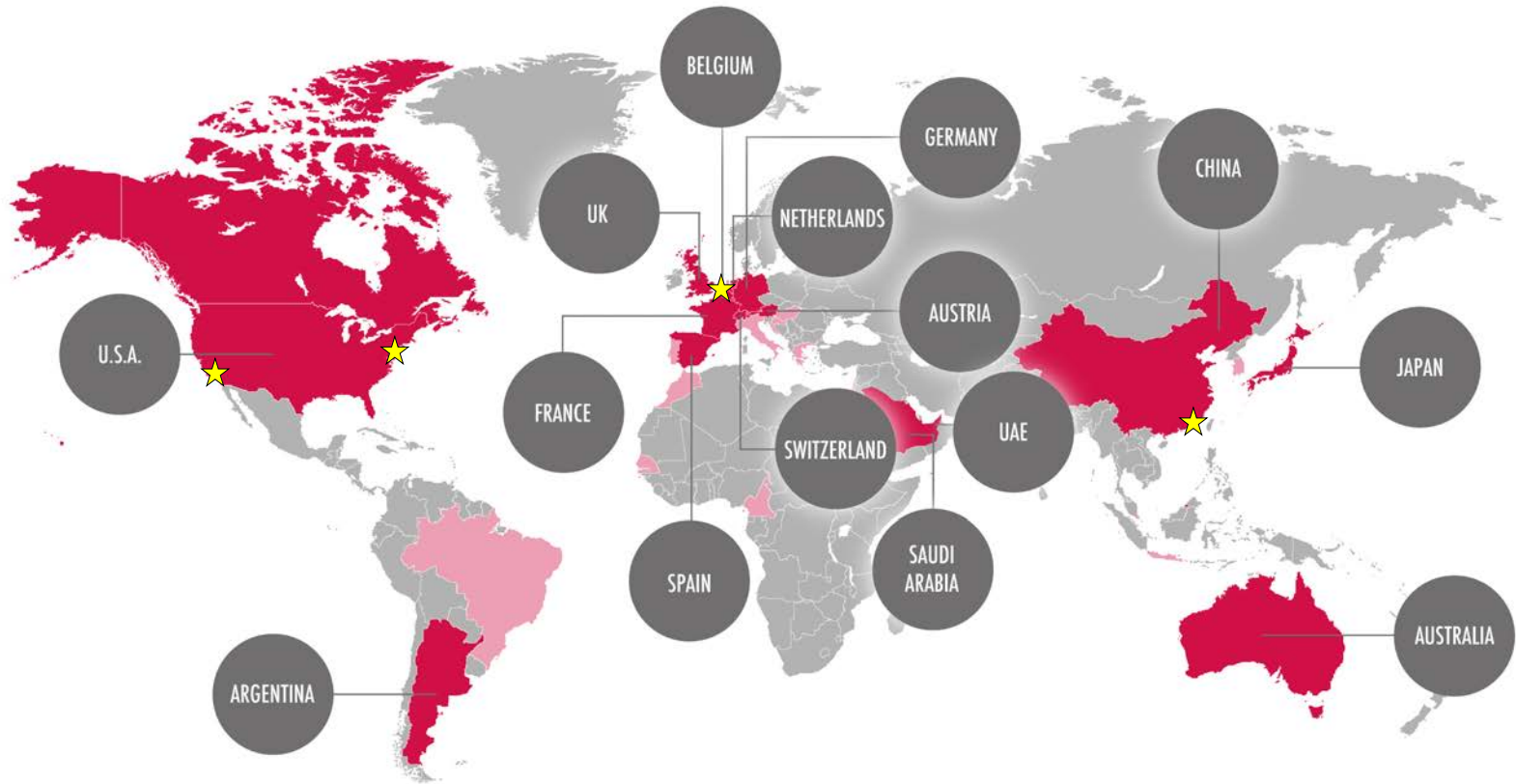
We unlock the power of technology to engage and delight audiences in every form of media and live experience.

THE COMPANIES WE KEEP

PRG shares your commitment to provide audiences with the best media and entertainment experiences through quality production.

Our business spans every major entertainment and experiential market with award-winning work for leading creators and brands.





The Americas – 15 locations

New York • New Windsor • Atlanta • Miami
 Secaucus • Orlando • Dallas • McCook
 Las Vegas • Los Angeles • Van Nuys
 Nashville • Buenos Aires

EMEA – 20 locations

Germany • United Kingdom
 UAE • Saudi Arabia • France
 Austria • Spain • Switzerland

Asia Pacific – 5 locations

Australia • China • Japan

PRG Alliance: Certified Partners
 Brazil • Cameroon • Croatia • Greece
 Hungary • Italy • Israel • Indonesia
 Morocco • Portugal • Senegal
 Singapore • South Korea

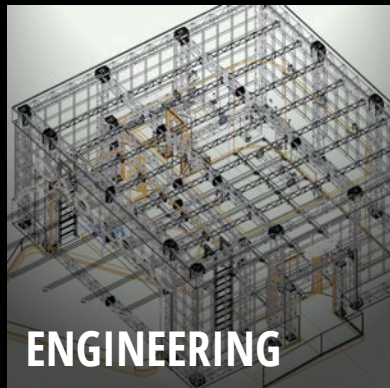
★ Full-service Scenic Facilities in Las Vegas, New York, Oostende and Shenzhen

ONE RESOURCE UNLIMITED REACH

PRG offers an established global operations model as the world's leading supplier of solutions for the experiential and entertainment industries.

PRG currently operates over 2.5 million square feet of production and warehouse space throughout 43 locations around the world, with locations in North America, Europe, Asia and Australia.





PRODUCTION SOLUTIONS

PRG offers the most comprehensive suite of services and gear available across the entertainment and events markets.

As an end-to-end partner, PRG has the technical expertise and gear to fully integrate into your design.

FULL-SERVICE MACHINE SHOPS

- *Fibre Lazer Cutting.* Our fiber lazer tools have highly precise cutting capabilities. If you can dream it, we can program it.
- *CNC Routers.* With their precise cutting abilities, our CNC routers cut wood, plexiglass, steel, and aluminum into practically any design imaginable.
- CNC Milling Centers and Lathes
- 3D Printing and Laser Etching



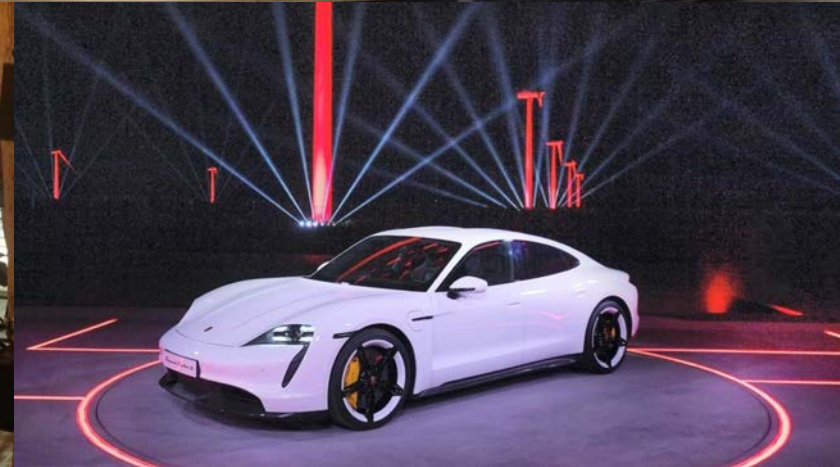
SCENIC FABRICATION & ART DEPARTMENTS

- All forms of wood, steel and aluminum construction
- Expertise in carving, sculpting, coatings and paint finishes
- Oversized spray booth to create high-end finishes
- Vacu-forming
- Large format printing



TURNTABLE AUTOMATION

- Custom rotating platform builds
- Wide variety of solutions capable of holding up to 5,500 lbs
- Easily supplies rotary motion for scenic elements such as LED screens, automobiles and custom fabrication



MECHANICS & AUTOMATION

- Custom and stock automated effects
- Wide variety of control solutions
- New control products meet CE standards, and EMC directive testing



OUR WORK

Selects from the Global Scenic portfolio



KEINEMUSIK, THE BROOKLYN MIRAGE

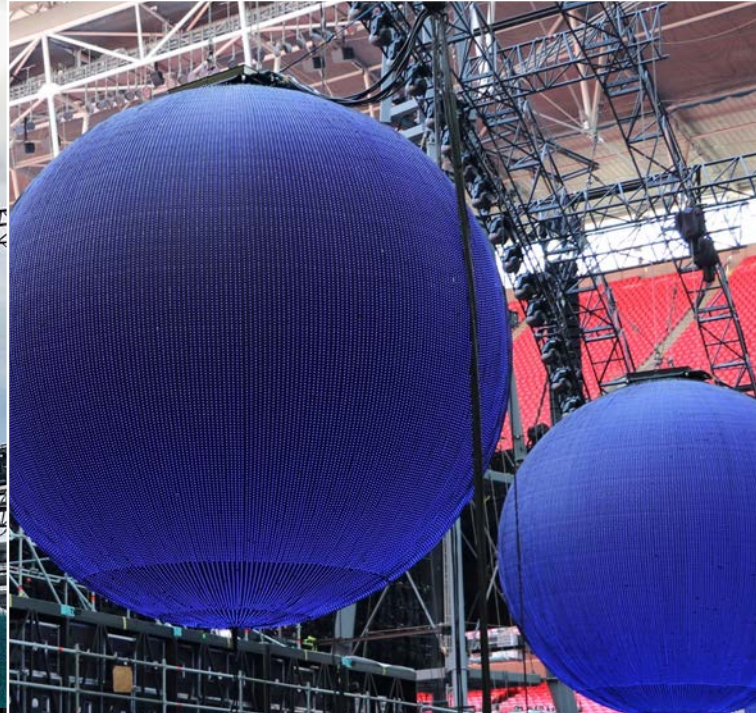
PRG collaborated with Bill Klopping from Beyond Design and Hard-Coat.com for Keinemusik's Brooklyn Mirage show. PRG scenic in New Windsor incorporated truss into Styrofoam blocks to bring "the cloud" stage design to life.



MADONNA, CELEBRATION TOUR

PRG supported the design of Madonna's tour, celebrating 40 years of revolutionary artistry, with LED and scenic.

- PRG worked with scenic designer Ric Lipson and lighting designer Rob Sinclair to create scenic doorway frames with pixel-controlled LED lights and illuminated crosses.
- Scenic support also includes a frame that lifted the queen of pop above the stage.



COLDPLAY, MUSIC OF SPHERES WORLD TOUR

The band committed to making their tours as environmentally sustainable as possible, working with PRG to come up with custom solutions to reduce their carbon footprint.

- PRG Projects worked on the engineering and fabrication of four inflatable LED spheres that play a role in supporting their green goals
- PRG supplied camera, switching, video and LED
- They hit the road with 50% reduced direct emissions compared to their previous tour
- Watch the video [here!](#)

AWAKENING AT THE WYNN

Wynn Las Vegas premiered their spectacular production with a star-studded creative team, a 360-degree round stage and some of Las Vegas's most high-tech production.

- PRG provided lighting, networking, audio and scenic for the show
- This is the theater's first new production since Le Rêve's 15-year run





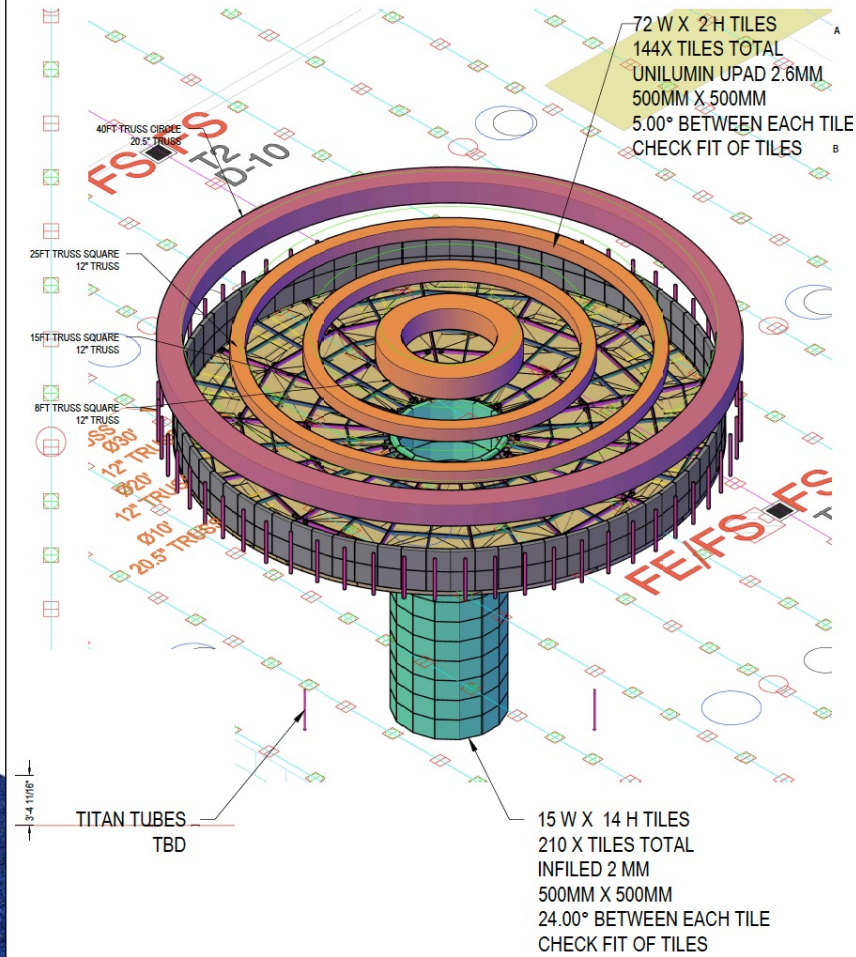
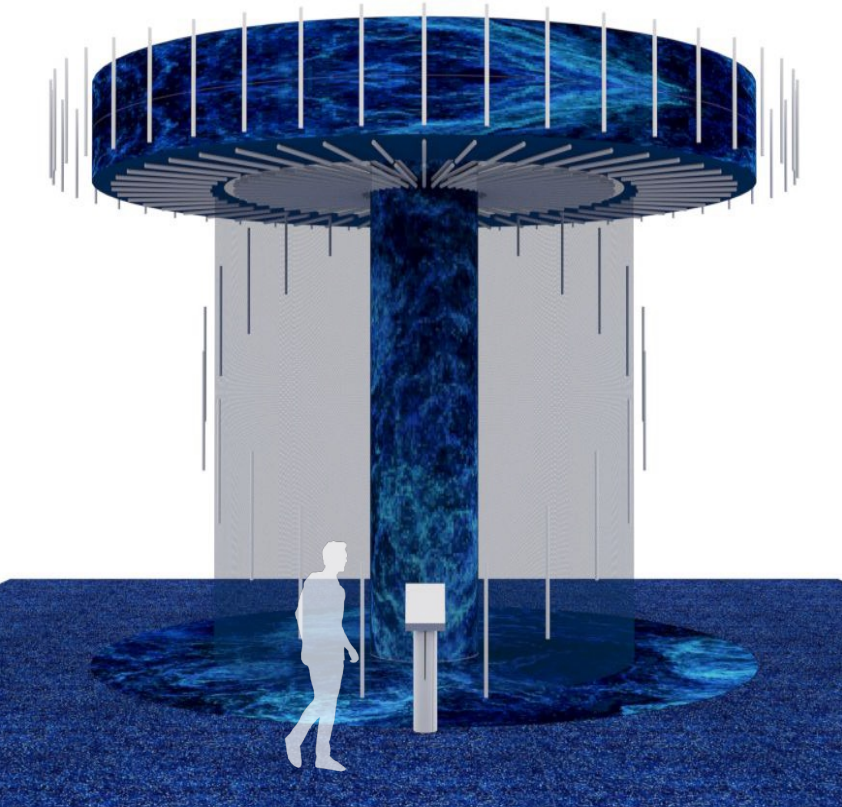
CVS HEALTH RETAIL LEADERSHIP EXPERIENCE

We are at the heart of CVS Health #RLE2022! Go West Creative knows it takes a village to bring creative vision to life and brought PRG on as their 360° solutions partner for this year's CVS Health Retail Leadership Experience.

- Massive 1200 panel curved LED wall in general session
- PRG provided 360° support including, audio, scenic, lighting, video, rigging, labor, broadcast and all environmental scenic elements on stage and throughout the event space



DELL TECHNOLOGIES WORLD 2022



THE CONCEPT

MAS agency and MC2 pitched a futuristic feature to act as an interactive eye-catcher for the Dell Technologies World exhibit floor. MC2 designed full assembly drawings and looked to PRG to integrate a video and lighting solution into the look to match the brief.



THE SOLUTION

MC2 built the structure with PRG providing the rigging concept, LED ring, circular truss and Titan tube lighting to achieve the desired effect based on the concept.



THE REALITY

The final look matched the initial pitch and created an engaging waterfall of light on the show floor for the 5,500 attendees in Vegas.



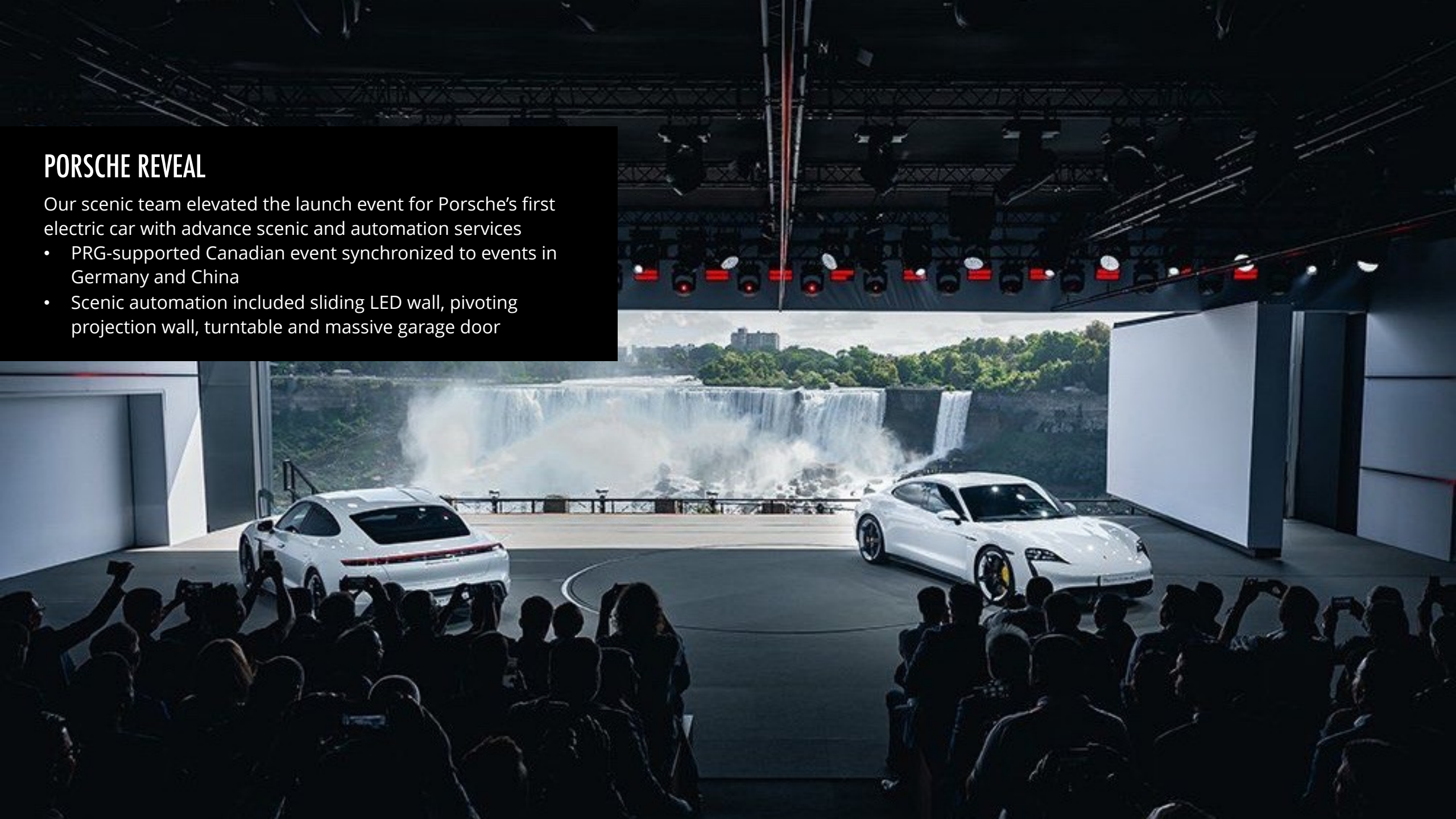
CHANEL LOVE SQUAD

PRG Scenic worked with Chanel for their introduction of new love themed products this past Valentine's Day, providing a custom scenic fabrication of an 8-foot turntable.

PORSCHE REVEAL

Our scenic team elevated the launch event for Porsche's first electric car with advance scenic and automation services

- PRG-supported Canadian event synchronized to events in Germany and China
- Scenic automation included sliding LED wall, pivoting projection wall, turntable and massive garage door





VOLKSWAGON CES 2023

Our scenic team elevated the launch event for Porsche's first electric car with advance scenic and automation services

- PRG-supported Canadian event synchronized to events in Germany and China
- Scenic automation included sliding LED wall, pivoting projection wall, turntable and massive garage door

NIKE MAXIM AWARDS

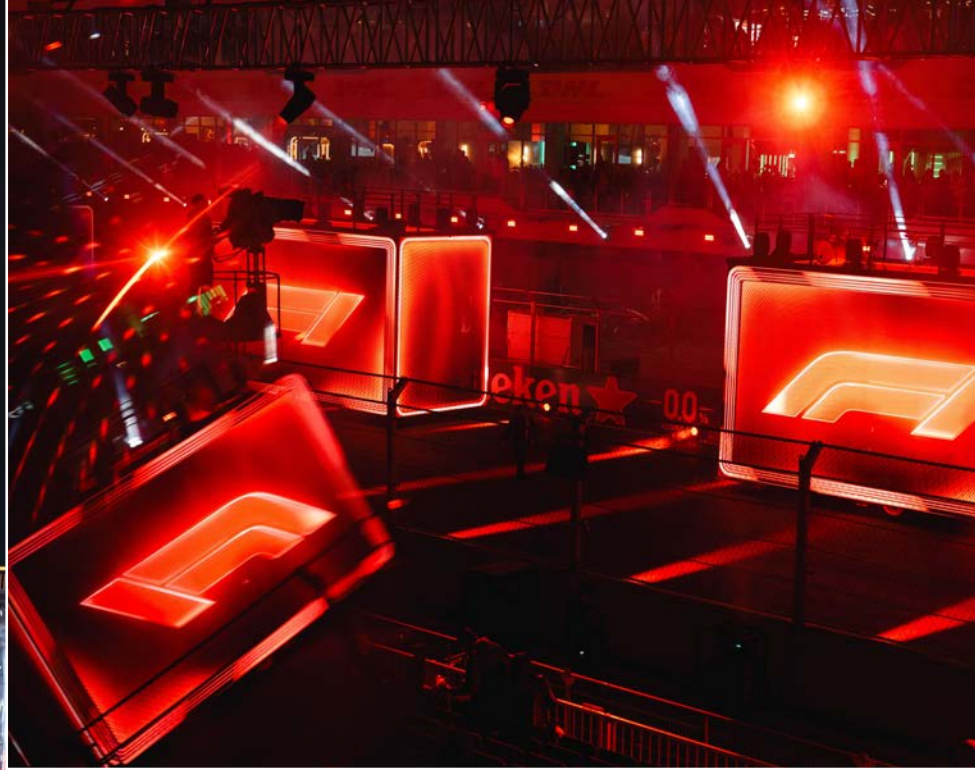
The Global Maxims Awards Show celebrated Nike's teams that propel the company's business, brands, and purpose at their annual JDI Day.

PRG Scenic Las Vegas transformed the vision into reality, crafting the stylish stage design from concept to completion. Guided by the brilliant Perron Reoettinger, our team brought forth:

- Custom fabricated scenic columns
- Curved LED integration, seamlessly woven into the design
- A dynamic, movable stage set, allowing Nike to curate a myriad of captivating looks throughout the show.

Our scenic experts seamlessly collaborated across PRG's product disciplines, working hand-in-hand with LED specialists to ensure every facet of the design was brilliantly feasible.





FORMULA 1 LAS VEGAS GRAND PRIX

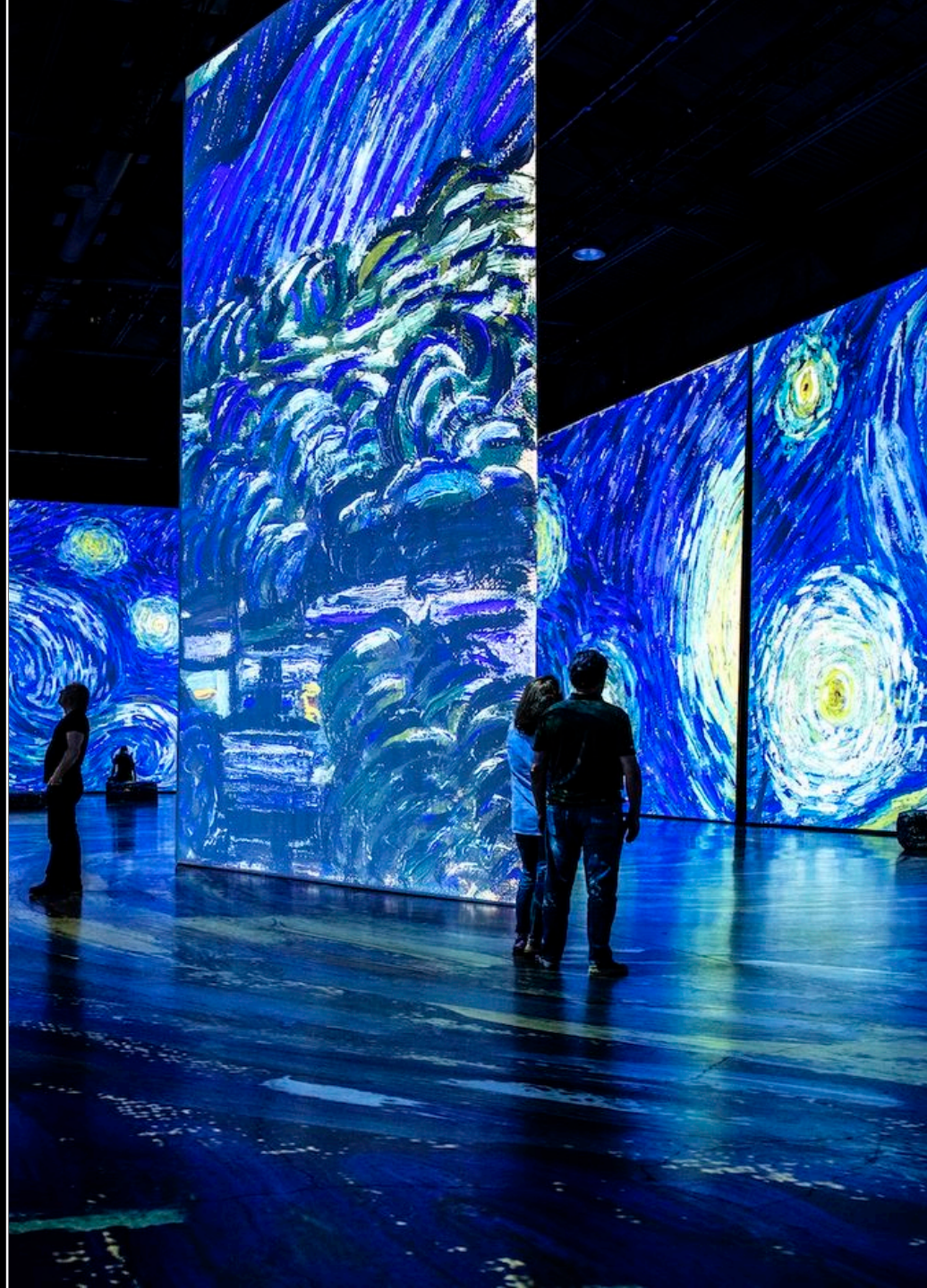
PRG played a pivotal role in delivering and seamlessly integrating a diverse range of production specialties, with a focus on the Opening Ceremony, for F1's arrival in the world capital of entertainment.

- Teaming up with F1 Las Vegas, Brian Burke, Stufish, and Tom Sutherland, PRG orchestrated the transformation of an expansive space into a visual extravaganza for the inaugural Las Vegas Grand Prix.
- We engineered Mobile Scenic Units (MSUs), clad in vibrant LEDs, providing a backdrop for world-renowned artists like John Legend, J Balvin, Kylie Minogue, Keith Urban, Thirty Seconds to Mars, and will.i.am for the show's Opening Ceremony.
- The units also played a crucial role in unveiling the Formula 1 drivers.
- PRG teams provided lighting, audio and rigging throughout the paddock area, not only for the opening ceremony but for all of race week.

IMMERSIVE VAN GOGH

PRG was the 360° production partner to the hit Immersive Van Gogh experience, an event that opened a new genre and exceeded all revenue expectations during the pandemic. PRG was with the event since its first days in Toronto and was essential to its expansion across the U.S. and Canada.

- Services provided include audio, lighting, media servers, projection and CAD
- Visuals powered by 52 projectors and 14 Mbox media servers
- Current activations include Toronto, Chicago, New York, San Francisco, Los Angeles and Charlotte
- PRG Scenic utilized both shops in NY and Las Vegas to ensure on time delivery of an impressive larger than life Van Gogh portrait, sunflower wall 8,000 multi-sized paintbrushes, synesthesia booth and AR display pocket gallery
- Watch the video [here](#)





SUPERBLUE MIAMI

Es Devlin's newest work, an immersive larger-than-life art experience, Forest of Us, opened at Superblue Miami.

- PRG Scenic provided technical design, fabrication and installation for the multi-room, two story exhibit.
- 106 maze walls and 90 ceiling panels comprised of three different types of mirrored surfaces.
- Self-supporting truss system, over 850 ft of LED tape and an architectural water feature that holds around 450 gallons of water.

STAR TREK: THE EXPERIENCE

Featured at the Las Vegas Hilton, this themed attraction includes 22 minute-simulator ride, retail area, bar and casino. PRG fabricated all components as well as engineered the design of show action equipment, designed the integration of set pieces and the architectural envelope, as well as provided the automation and show control.



CONTACTS

Mark Peterson

General Manager, Sales & Business Development
845.567.5759 | mpeterson@prg.com

John Saltonstall

Vice President, Global Scenic
702.210.7071 | john.saltonstall@prg.com

CONNECT WITH PRG

